



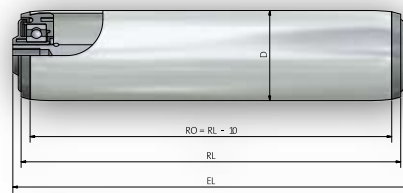
# What roller plays the basic role with you?

**Rollex** Förderelemente produces conveyor rollers and components for the conveying engineering in different versions. Roller diameters 16 mm up to 133 mm are Rollex standard.

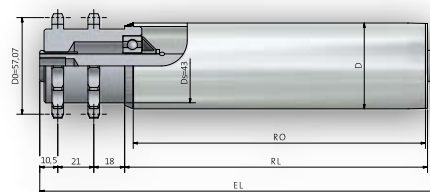
With **Rollex** you can choose between different driving systems, like chain, tooth belt, round belt, flat belt and Poly V grooved belt.

## The delivery program covers:

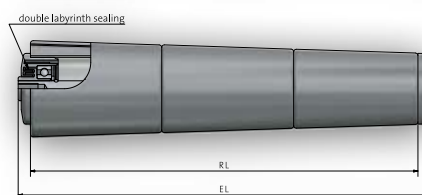
Gravity Roller



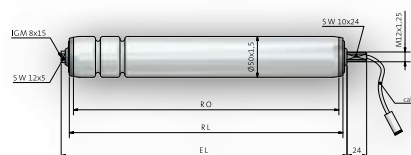
Driven Roller



Conical Roller



Motor Roller



Drum Motors

