

**armo**  
X

## Dock leveller

model ARTL

Telescopic lip

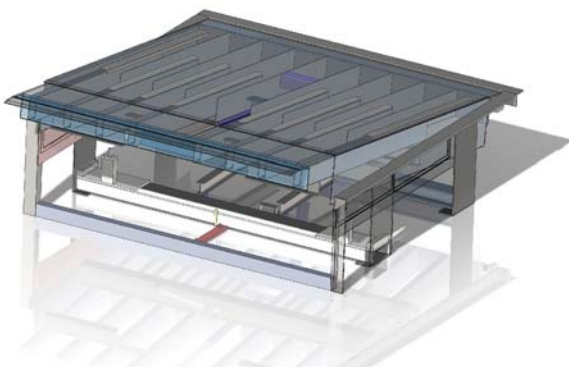


**Armo (UK)**

**Tel: 01952 606133**

email: [armouk@armoweb.com](mailto:armouk@armoweb.com)

The Armo electro/hydraulic telescopic lip dock leveller.



- Infinite lip control for the most demanding loading scenario.
- Robust construction.
- Fully compliant with **BS EN 1398**.
- Precision manufactured by Armo's robotic production line.
- Automated production means fast delivery turnaround.



# Telescopic lip dock leveller

model ARTL



## Features

The dock leveller is at the heart of any good loading bay design and Armo dock levellers are at the heart of our product range. They are designed to be robust and reliable and to meet and exceed all current European legislative requirements.

Armo dock levellers are robust in design and construction; the platforms are made from 6/8 mm tear plate steel, supported by a minimum of 8 longitudinal beams to strengthen the deck but still allowing it to twist through its length to cater for vehicles that are out of level. The ARTL is in full compliance with BS EN 1398.

The telescopic lip version is used more frequently now with pressure on all distributors to focus on volume fill of their trailers and the use of double deck vehicles. The standard telescopic lip dock levellers employ two lengths of lip, 500mm and 1000mm enabling extended reach over tail lifts and with its precise control making it possible to unload vehicles with pallets right at the very back.

### Frame design

Armo telescopic lip dock levellers are designed in 3 installation styles:

**Traditional pit mounting** where the pit is bounded with previously cast-in pit edge angles and the dock leveller sits on a solid pit base, the dock leveller is welded in at the back and front.

**Suspended** versions are available usually for new build projects or to replace existing suspended dock levellers. As their name suggests the dock leveller is suspended from its top edge allowing the underside of the pit to be clear for access by tail lifts; this enables the dock leveller clear access into the deck of the vehicle.

**Box style** dock levellers are designed to provide quick and easy installation in existing buildings. To install a box leveller an oversize pit is required complete with a flat base, the box model leveller is positioned and fixed down and concrete poured around it. Once the electrics are connected the leveller is ready to go.

## Operation

The platform rise button is held depressed; the platform can rise to the top of its range, and then by pressing the lip extend button the lip will move forward to the desired loading position, by then pressing the platform lower button the lip will descend onto the bed of the vehicle.

As standard the Armo ARTL comes with an auto-park function, by pressing this button the platform will rise and the lip retracts fully, the platform then lowers itself back to the cross traffic position to complete the parking process.



Armo have been manufacturing high quality loading bay and lifting table solutions since 1972, for further technical or pricing information please contact our head office:

**Armo (UK)**

**01952 606133**

[www.armo.uk.com](http://www.armo.uk.com)

Unit 300, Queensway Business Park,  
Hadley Park West, Telford, Shropshire. TF1 7UL

Fax: 01952 608133

Please note that the author reserves the right to make modifications to this information without prior notice

